

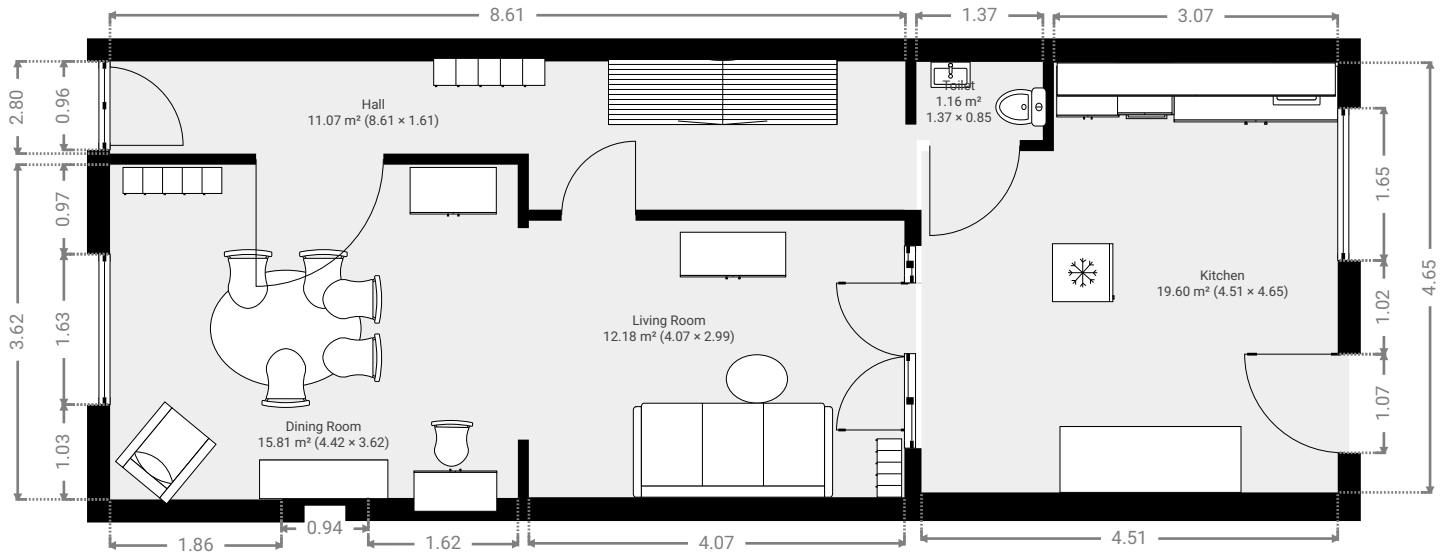
Grondplannen Brabanconnestraat 87 Leuven

TOTAL AREA: 212.78 m² • LIVING AREA: 178.80 m² • FLOORS: 5 • ROOMS: 16



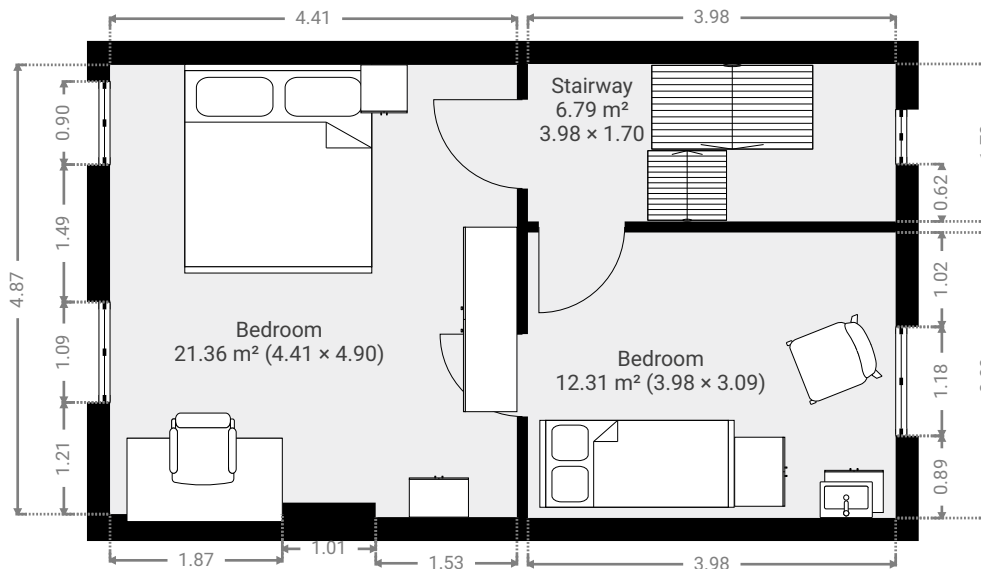
▼ Ground Floor

TOTAL AREA: 59.78 m² • LIVING AREA: 59.78 m² • ROOMS: 5

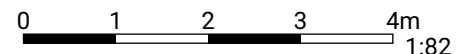


▼ 1st Floor

TOTAL AREA: 40.45 m² • LIVING AREA: 40.45 m² • ROOMS: 3



THIS FLOOR PLAN IS PROVIDED WITHOUT WARRANTY OF ANY KIND. SENSOPIA DISCLAIMS ANY WARRANTY INCLUDING, WITHOUT LIMITATION, SATISFACTORY QUALITY OR ACCURACY OF DIMENSIONS.



Page 1/3

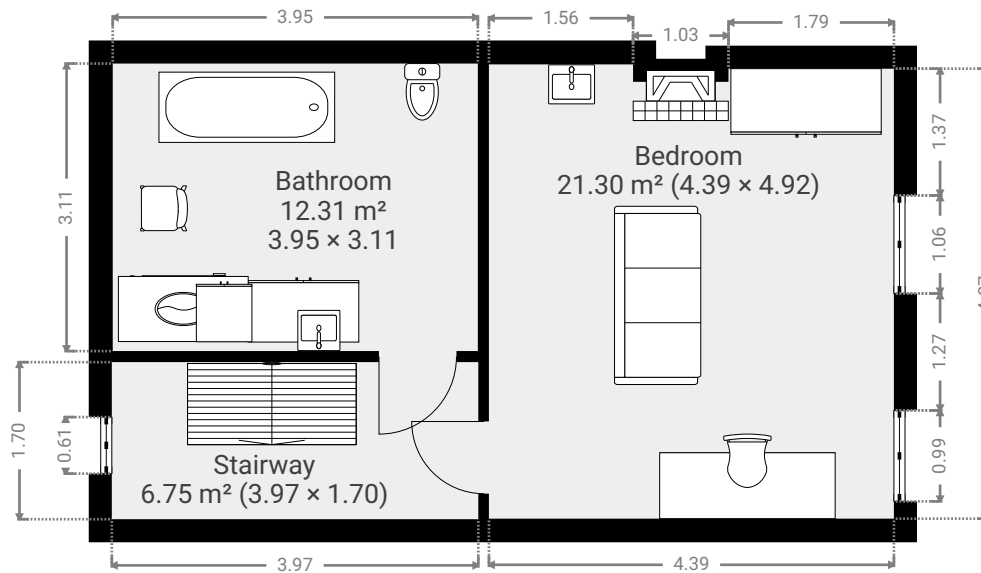
Grondplannen Brabanconnestraat 87 Leuven

TOTAL AREA: 212.78 m² • LIVING AREA: 178.80 m² • FLOORS: 5 • ROOMS: 16



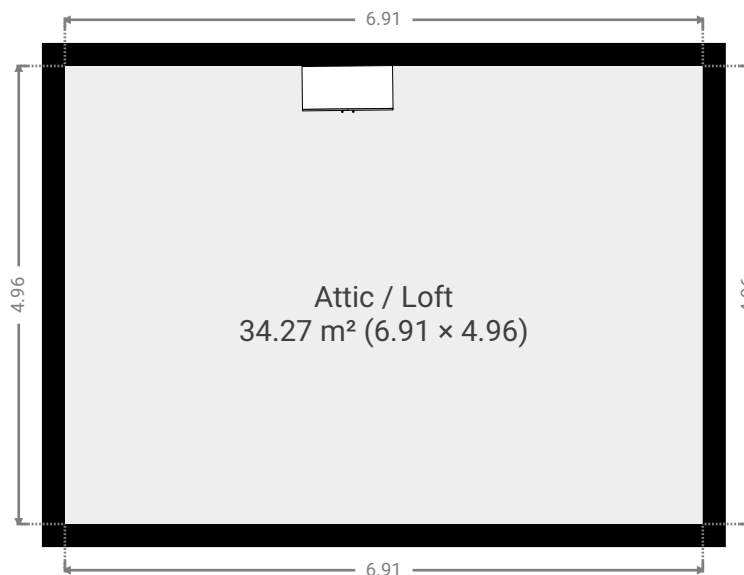
▼ 2nd Floor

TOTAL AREA: 40.33 m² • LIVING AREA: 40.33 m² • ROOMS: 3

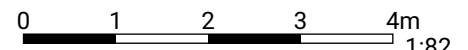


▼ 3rd Floor

TOTAL AREA: 34.26 m² • LIVING AREA: 34.26 m² • ROOMS: 1



THIS FLOOR PLAN IS PROVIDED WITHOUT WARRANTY OF ANY KIND. SENSOPIA DISCLAIMS ANY WARRANTY INCLUDING, WITHOUT LIMITATION, SATISFACTORY QUALITY OR ACCURACY OF DIMENSIONS.



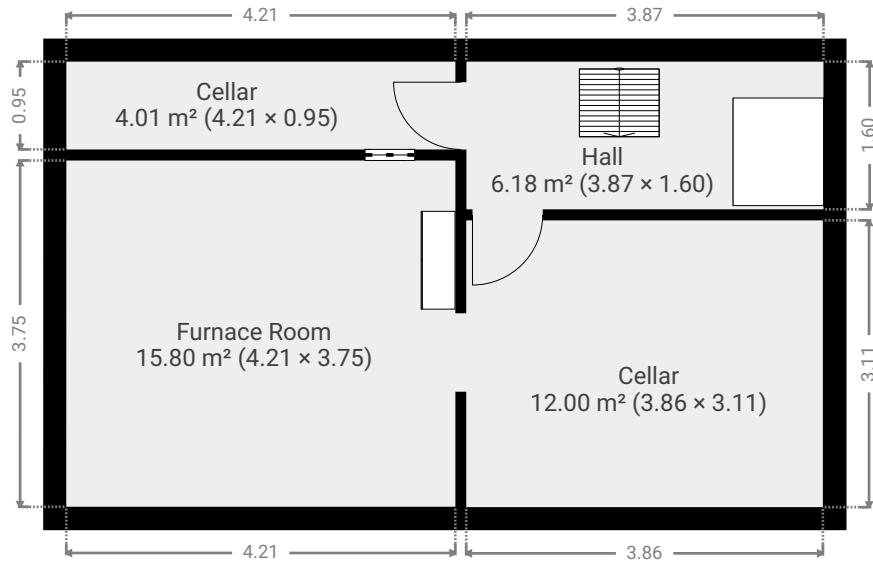
Page 2/3

Grondplannen Brabanconnestraat 87 leuven

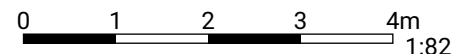
TOTAL AREA: 212.78 m² • LIVING AREA: 178.80 m² • FLOORS: 5 • ROOMS: 16

▼ Basement • Level 1

TOTAL AREA: 37.96 m² • LIVING AREA: 3.98 m² • ROOMS: 4



THIS FLOOR PLAN IS PROVIDED WITHOUT WARRANTY OF ANY KIND. SENSOPIA DISCLAIMS ANY WARRANTY INCLUDING, WITHOUT LIMITATION, SATISFACTORY QUALITY OR ACCURACY OF DIMENSIONS.



1:82
Page 3/3